



Getting Started

This document outlines the steps to get started using the Omnis Physician Desktop. For detailed instructions on the total functionality of the application refer to the User Guide.

Installation

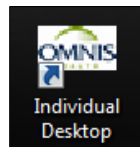
Complete these installation instructions prior to inserting the Omnis USB-Serial data cable.

Download the installation application from the web site and save it to the Desktop on the PC.

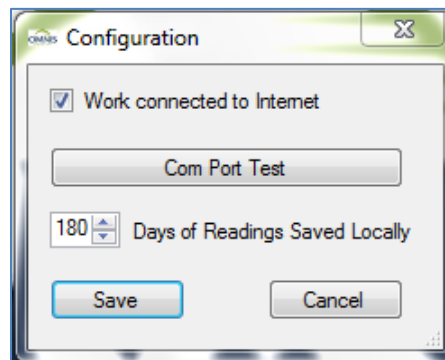
For best results, do not click run.

Right-click on the downloaded file on the Desktop and select **Run As Administrator** to start the installation.

The installation will place a shortcut on the desktop to the application.

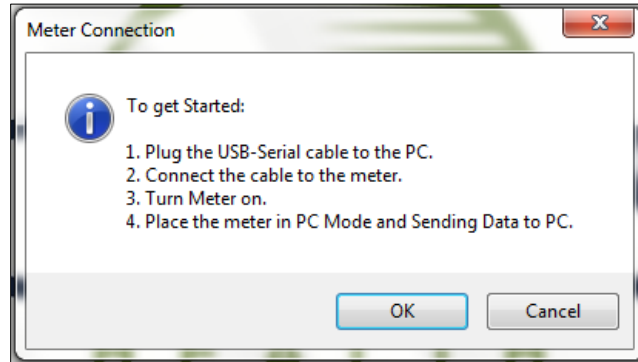


Double click the shortcut and the application will start up. The first time the application starts it will require some configuration and registration information.



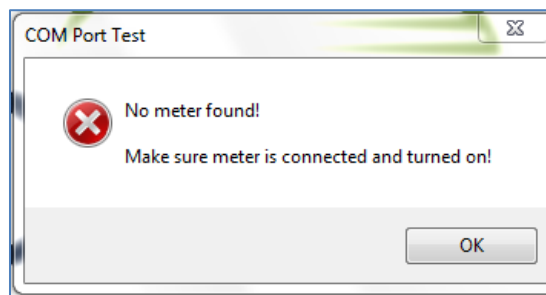
If you are not connected to the internet or plan to not submit the data for sharing, then uncheck the “Work connected to Internet” checkbox.

Click **Save** to save the changes and proceed to get started with the program.



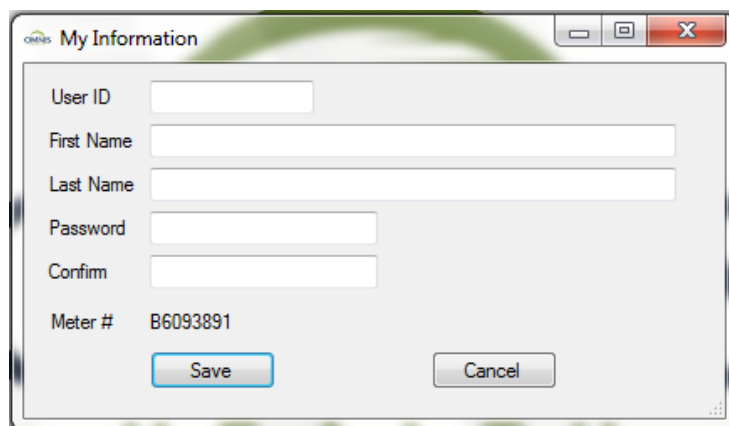
Once you have inserted the USB cable, plug a meter in and set it to PC mode, click **OK**.

If the program displays the following, there is a problem with the communications port, the USB Cable or the meter. Please contact support for assistance.



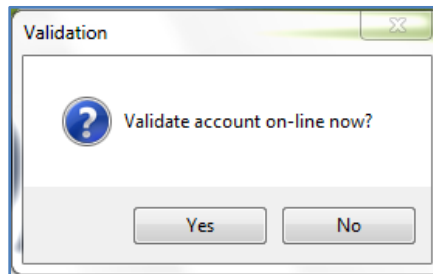
If the program is communicating successfully with the meter, it will find the connection to the meter and get the meter's serial number.

The application will then present the User Information page.



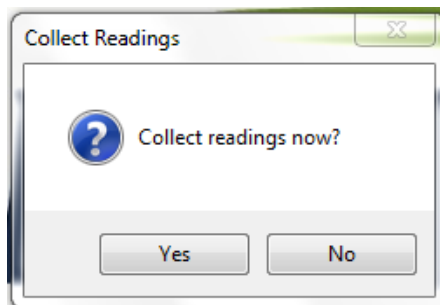
Type in the requested information as it was entered on the Omnis Data Manager Website. If you did not register on the website, then any User ID can be used. The User ID can be changed if you decide to use the website later.

You will be prompted to validate your account on-line. This places the serial number of the meter in your website profile and verifies that you are using the correct User ID and password.



Click **No** and the data is saved, but the program will not function completely as designed until you register on the web site the next time you start the program.

Click **Yes** and the program will contact the Website via the internet. A message will appear that tells you if the program was successfully able to validate with the web site.



Clicking No will bring you to the main screen of the program, clicking Yes will take you into the data collection and presentation (see below for details).

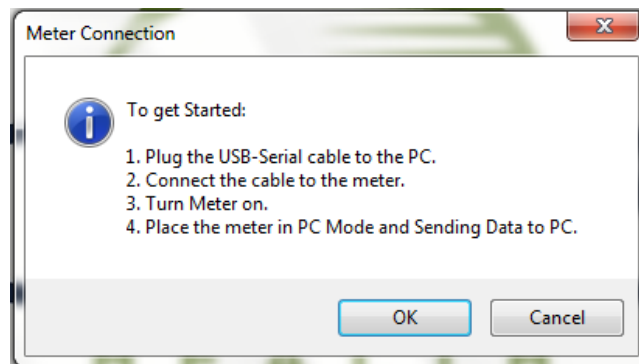
The application is now configured for use.



Collecting Readings

Each user has an account that is stored locally and on the data storage server. On the main menu click Readings -> Collect.

The program will step you through the collection of the readings from the meter. It will provide instructions with the steps or actions for you to take.



Once you have inserted the USB cable, plug a meter in and set it to PC mode, click **OK**.

The application will find the connection to the meter and get the meter's serial number.

The application will then present the Readings Chart with the collected readings.

The screenshot shows a window titled "Omnis Health Individual Data manager" with a menu bar (User, Readings, Help, Exit) and an "Update and Send" button. Below is a table with the following data:

	Date	Value	Reading Type	Notes
▶	4/12/2010 7:12 PM	128 mg/dL	None	
	4/13/2010 6:10 AM	128 mg/dL	None	
	4/14/2010 9:11 AM	112 mg/dL	None	
	4/20/2010 2:30 PM	117 mg/dL	None	
	4/21/2010 3:10 PM	69 mg/dL	None	
	4/22/2010 3:11 PM	124 mg/dL	None	
	4/23/2010 3:12 PM	58 mg/dL	None	
	4/24/2010 3:13 PM	122 mg/dL	None	
	4/25/2010 3:14 PM	57 mg/dL	None	
	4/26/2010 3:14 PM	95 mg/dL	None	
	4/27/2010 3:15 PM	132 mg/dL	None	
	4/28/2010 3:16 PM	97 mg/dL	None	
	4/29/2010 3:17 PM	91 mg/dL	None	
	4/30/2010 3:17 PM	144 mg/dL	None	
	5/1/2010 3:18 PM	102 mg/dL	None	

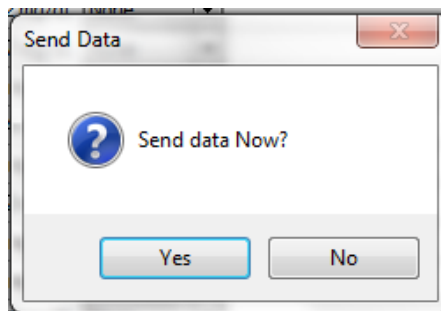
The program will automatically save the readings locally and then will provide the ability to indicate the type of reading collected and add any special notes that you would like to add.

The Types of readings are:

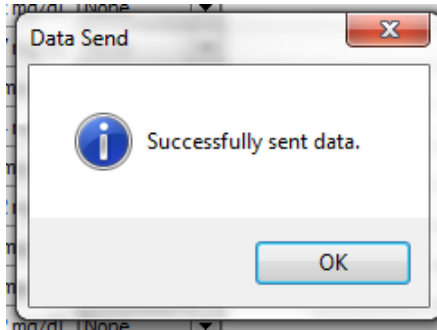
- None – This is the default. Indicates the readings is not one of the other types.
- Fasting – First reading of the day (generally 14 hours since last meal)
- Pre-Meal – Reading taken before a meal (generally within 2 hours before a meal)
- Post-Meal – Reading taken after eating a meal (generally within the 2 hours after eating)

[Note: Consult with your Physician for the definitions of these reading types that they may use.]

Make any changes to the entries of the collected readings and click **Update and Send** to save your changes. You will be prompted to send the data to the Website.



Click **Yes** to send the readings and the extra data to the Website.



If the readings are sent successfully to the Website, you are notified. Click **OK** to continue.