



Installing OMNIS PC Collector Software

1. Installing OMNIS PC Collector Software

System Requirements

- Windows XP
- Windows Vista

Create an Account

- Launch your web browser and navigate to the OMNIS Data Manager website: <http://omnisdatamanager.com>
- Select Register
- Choose a User Name (Must be unique. It will be checked when you submit the data)
- Password (must be at least 6 characters and contain at least 2 non-alpha characters – numbers or symbols)
- Enter your First and Last Name
- Enter your Email address (required)
- Select Next
- Confirm your registration information by selecting Register

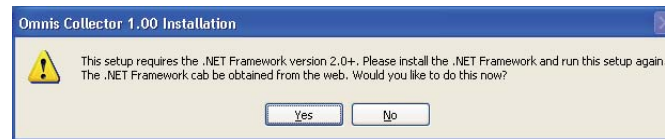
An email message will be sent to the email address specified. Please open the email and follow the instructions to verify your email address.

A login web page will be presented. Login using your User Name and Password. Your personal OMNIS Data Manager web page will be displayed. After doing so you will be able to download the required software.

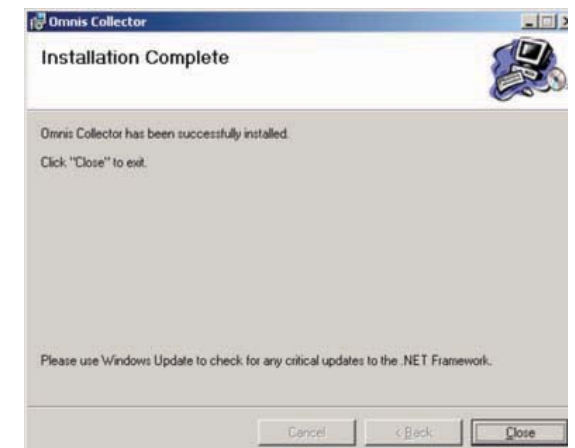
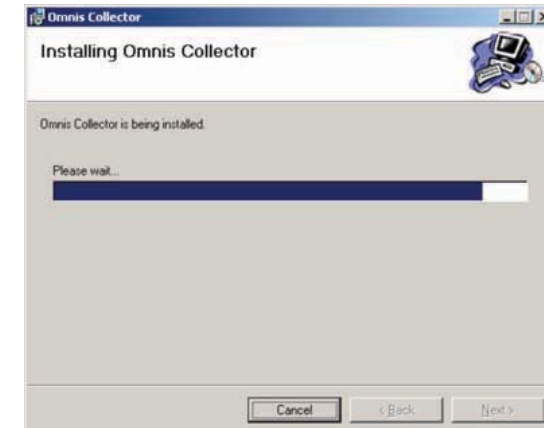
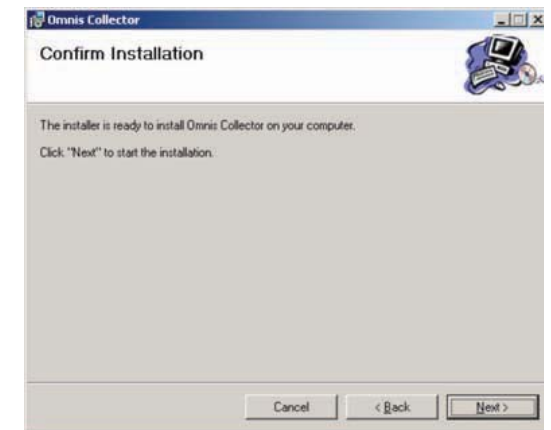
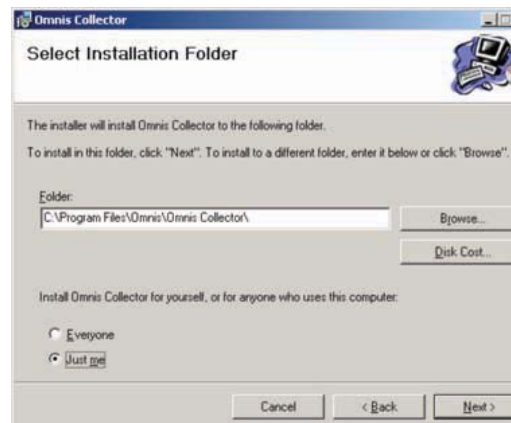
2. Download the PC Collector Software

Select **Download Collector** from the Configuration menu. A confirmation window will pop up – Select Download.

Note: This software requires Microsoft .NET Framework 2.0 or later to run. You may be prompted during installation to install this package. This package may also be obtained prior to installation by visiting Microsoft Windows Update. Select Custom at the Welcome screen then choose Microsoft .NET Framework 2.0 from the list of optional updates. If you do not have the .NET Framework installed you will see the following prompt:



Double-click the Omnis Setup package. The following Setup Wizard screens appear:



The OMNIS PC Collector has been installed. The program now will appear on your Start Menu. A shortcut icon also will appear on your desktop:



3. Collecting a Reading

Take your readings as you usually do. On your PC: double-click on the Omnis desktop icon. The first screen you see tells you how to begin. The first time you “Collect Readings,” only the most recent reading is collected. Afterward, all readings after the date of the first reading will be collected.



Connect the USB cable

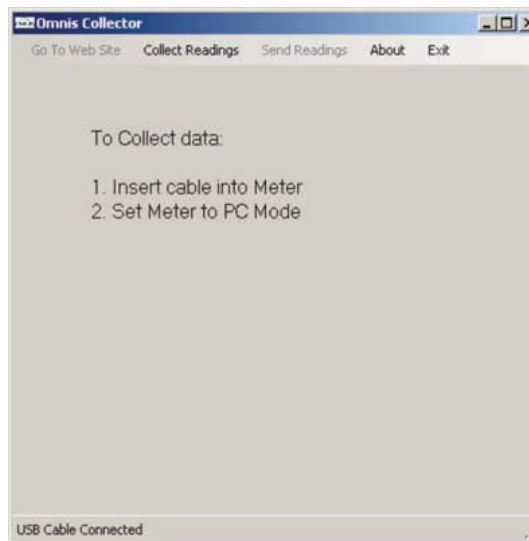
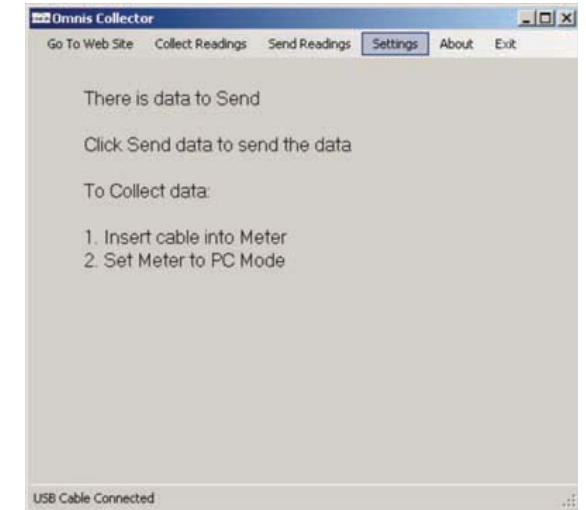
4. Select Collect Readings



Several progress messages will appear. Note: the first time you use the PC Collector it will ask for your user name and password at this point. The following screen will pop up for you to enter your information.

5. Select Send Readings.

A progress message is shown as readings are sent to your web site.

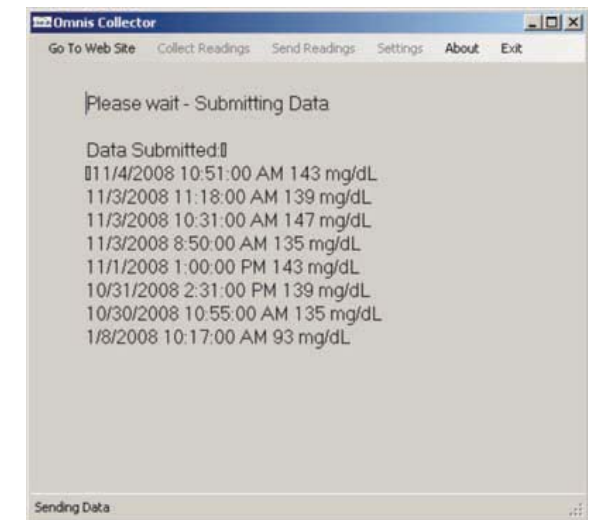


Power on the meter and put it into PC mode. To do this:

- Turn the meter on (press and hold the scroll key for 2 seconds)
- Press the scroll key again briefly to turn on the Setup Screen menu
- Roll the scroll key up to enable the PC link mode ...the mouse icon will blink. An audible announcement will say “PC Link”
- Press the scroll key once. An audible announcement will say “Sending data to PC”



When you have entered your User ID and Password, select Save. The following screen will be presented. The menu choice “Send Readings” is now active (not grayed out). Check the Save Password box to avoid having to enter your password every time the program accesses the PC Collector Server.



A Status message will indicate completion. You may now launch the OMNIS Data Manager web page to see your data ([select Go To Web Site](#)).



535 Enterprise Avenue • Conway, AR 72032
www.omnishealth.com