

Blood Glucose Meter

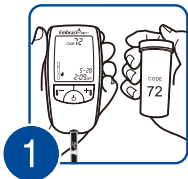


Embrace[®]
PRO[™]

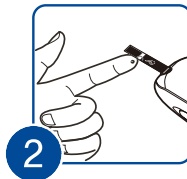
User's Manual
Manual De Usuario

*TEST SUMMARY

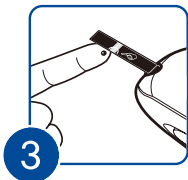
This summary is intended only as a quick reference and not as a substitute for the Embrace PRO™ Blood Glucose Meter User Manual. Please read the entire manual before you begin the test.



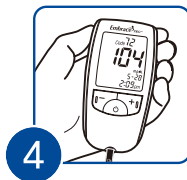
Insert the Test Strip. Check the code number. The code on the meter display must match the code on the test strip vial.



Apply blood sample to yellow-side edge of the test strip.



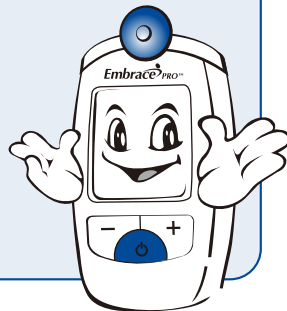
Hold the yellow side-edge of the test strip to the blood drop until the sample has completely filled the confirmation window. Once the confirmation window is filled, the meter will begin the count down.



You'll get a reliable result in just 5 seconds.

“Thank you for using Embrace PRO™ Blood Glucose Meter”

This user manual will tell you all you need to know about the system and how it works.
Please read carefully before using the meter.



*PRECAUTIONS

Intended Use

Embrace PRO™ Test Strips are used with Embrace PRO™ Meter for quantitatively measuring glucose in fresh capillary whole blood from fingertip, palm, upper arm, forearm, thigh and calf. Embrace PRO™ Test Strips are for self-testing outside the body (*in vitro* diagnostic use). Regular self-testing of blood glucose levels can help you to know how well your diabetes is being controlled. Diabetes should be managed under the guidance of a doctor or healthcare professional.

Test Principle

The Embrace PRO™ Blood Glucose Meter is based on measurement of electrical currents caused by the reaction of glucose with the reagents on the gold electrode of the strip. The blood sample is drawn into the strip's reaction chamber through capillary action. Glucose in the sample reacts with glucose dehydrogenase and mediator. This reaction creates electrical currents. The consequent electrical currents is proportional to the glucose concentration in the blood and converted to the equivalent glucose concentration by the algorithm programmed in the Embrace PRO™ Meter.

Precautions for Use

- The Embrace PRO™ Blood Glucose Meter is calibrated to produce value equivalent to plasma specimens on a laboratory analyzer (YSI 2300 STAT Plus).
- The Embrace PRO™ Blood Glucose Meter should not be used for the diagnosis of diabetes.
- Rapid change in temperature may cause inaccurate results in reading. When taking the test meter from cold to warm area or warm to cold area, let the test meter sit for a while 30 minutes to adjust to the room temperature.

- Do not drop the test meter.
- Do not disassemble, repair or remodel. The sensitive parts could be damaged and the warranty will then become invalid.

Precautions for Test Strip

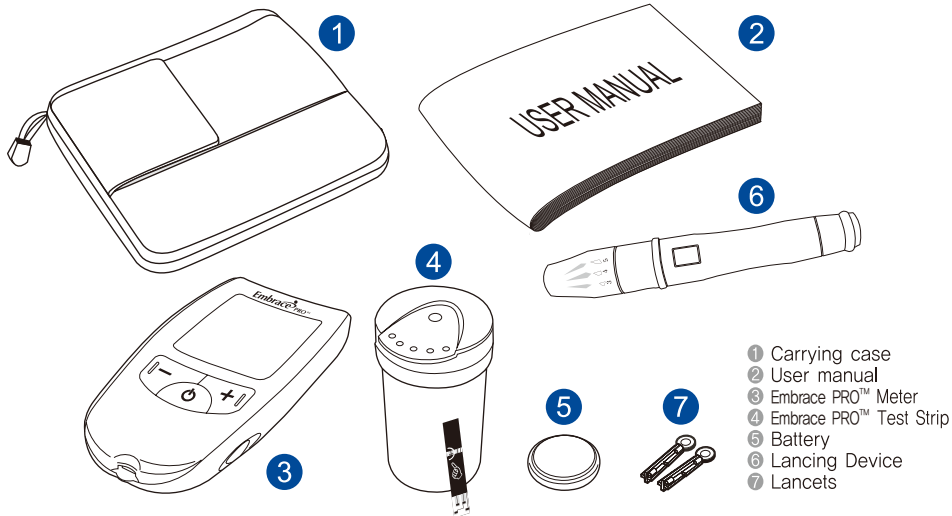
- Store test strip vials in dry place with temperature between 36°F ~ 86°F (2°C ~ 30°C).
- Avoid direct sunlight and heat.
- Store test strip only in their original vial and do not transfer test strip to any other container.
- After taking a test strip out of vial, close the vial immediately and store it as recommended.
- Do not touch the test strip with wet hands.
- Do not use the test strip beyond the expiration date that is printed on the vial.
- Do not bend, cut or alter test strips.
- Do not insert same test strip into the test port multiple times. It may cause an improper operation.

Safekeeping

- Store the Embrace PRO™ Meter in a temperature between 32°F ~ 104°F (0°C ~ 40°C)
- Store the Embrace PRO™ Meter in less than 85% relative humidity.
- Make sure to keep Embrace PRO™ Meter in a sanitary environment.
- Keep the meter away from direct sunlight for long periods of time.
- Keep the test port away from dirt, blood or water.
- Do not store your meter and test strips in the car, bathroom or refrigerator.
(sensitive to temperature and humidity)
- Keep the meter, test strip vials and lancing materials away from children.
- Clean the outside of the meter using a moist (not wet) cloth or tissue with isopropyl alcohol or mild detergent with water.
Do not immerse the meter in water or other liquid.

Table of Contents

• Getting Started ...	Embrace PRO™ Blood Glucose Meter 01 Embrace PRO™ Meter 02 Embrace PRO™ Meter LCD Display 04 Embrace PRO™ Test Strip 05
• Before Testing ...	Check the code number 06 Checking your system with Embrace PRO™ Control Solution 08
	Preparing the Lancing Device 13
• Testing Blood Glucose ...	To run the blood glucose test, you need 16
• Using the Meter Memory Function ...	Entering the Event Recording Mode 21 Understanding your Test Results 23 Recalling the Previous Test Results 24
• Setting the Meter ...	Set the time and unit measurement of meter 28
• Caring for Embrace PRO™ Meter ...	Installing Battery 32
• Additional Information ...	Display Message Guide 34 Troubleshooting Guide 39 Specification 40 Performance Characteristics 41



- 1 Carrying case
- 2 User manual
- 3 Embrace PRO™ Meter
- 4 Embrace PRO™ Test Strip
- 5 Battery
- 6 Lancing Device
- 7 Lancets

① LCD Display

- Test results, icons and simple messages appear here.

② +/- Button

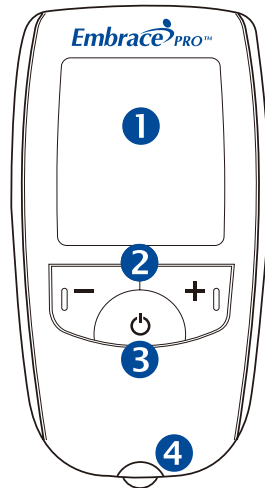
- Recall the stored test result in the memory mode.
- Select an event in the event recording mode.
- Change the date and time in the set mode.

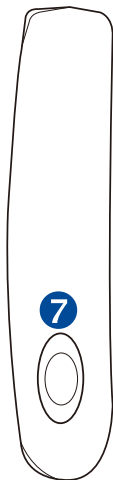
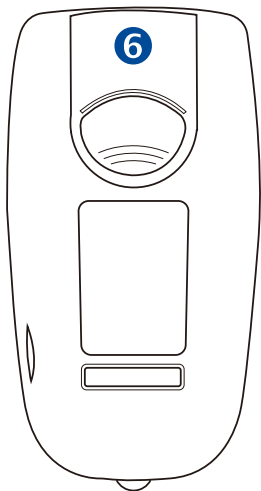
③ Power Button

- Turns the meter on/off.
- Enters the different modes while pressing the power button for a few seconds.
(3 seconds : Set Mode)
- Deletes all stored test results in the memory mode.

④ Test Port

- Insert the Embrace PRO™ Test Strip for testing.
- Meter turns on automatically when you insert the test strip.
- Meter displays the code automatically.



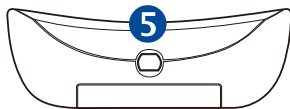


5 Data Port

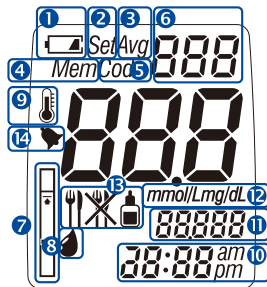
– Transfer your test results to the computer.

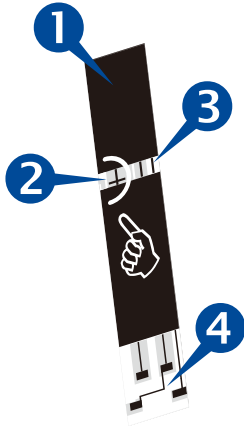
6 Battery Cover

7 Test Strip Release Button



- ① Battery life.
- ② Set mode.
- ③ Average value.
- ④ Memory mode.
- ⑤ Code set on the meter.
- ⑥ Memory and the code.
For the code No., the test meter displays the current code.
- ⑦ Strip icon when the strip icon blinks, insert test strip to the test meter.
- ⑧ Blood drop icon, when the blood drop icon blinks, apply blood sample.
- ⑨ Temperature icon when the meter is not used at a recommended temperature range, "Er1" and temperature icon appeared.
- ⑩ Current time and tested time in memory mode.
- ⑪ Current date and tested date in memory mode.
- ⑫ Unit of measurement.
- ⑬ Event icon selected according to user's condition,
It will be useful to manage your glucose level if you record an event icon regarding your condition.
- ⑭ Alarm. You can set the alarm up to 4 times. Each alarm rings for 10 seconds.





1 Grip

– Hold this part to insert or remove test strip.

2 Yellow Side-edge

– Apply blood sample here; Blood wicks in automatically.

3 Confirmation window

– Confirms that an accurate sample entered the window.

4 Electrodes

– Insert this part into meter's test port.

Code is used to calibrate the Embrace PRO™ Blood Glucose Meter with the Embrace PRO™ Test Strip for accurate results. You must check the code on the meter before using it for the first time and then every time you change to another vial of test strips. Whenever you perform a test, match the code on the Meter display with the code on the test strip vial.

**1**

Insert Embrace PRO™ Test Strip

Insert Embrace PRO™ Test Strip into the test port and meter will turn on automatically. Then the code, strip icon and blood icon will appear.

**2**

Check the Code Number

Make sure that the code on the meter display matches the code on the test strip vial. If the two codes match, you may begin the test.



CAUTION

- If the code on your meter doesn't match the code on the test strip vial, insert new test strip and check the code again.
- If they do not match again, please contact Omnis Health at 1-877-979-5454.

Control solution testing is used to check the performance of your meter and test strip. The Embrace PRO™ Control Solution contains a measured amount of glucose that reacts with the Embrace PRO™ Test Strip.

The control solution test confirms that your meter and test strips are working correctly. Compare your control solution test results with range printed on the test strip vial label. It is very important that you do this simple check routinely to make sure you get accurate test results.

**INFORMATION**

Please check your system with Embrace PRO™ Control Solution under following situations.

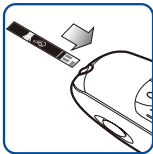
- If you want to check the performance of your meter and test strip.
- If you leave your test strip vial cap open for long time.
- If you drop your meter.
- If you suspect your meter or test strips are not working properly.
- If your blood glucose test results are not consistent and accurate.

**CAUTION**

- Use only Embrace PRO™ Control Solution for the test.
- Check the expiration date on the control solution vial. Do not use if expiration date has passed.
- The control solution, meter, and test strips should be kept at room temperature prior to use.

! CAUTION

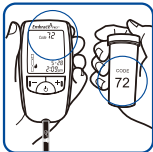
- Use control solution for only three months after the first use. When you open new vial of control solution, count three months forward and write the date on the label of the control solution vial for your convenience. Discard after three months.
- Do not drink the control solution.
- Tightly replace the cap of control solution and store the control solution at a room temperature after the test.



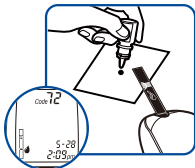
1

Insert Test Strip

Insert the test strip, with the printed side facing up, into the test port of the meter. Gently push in all the way in until it goes no further. The meter will turn on automatically and beep. Then the code and the blood drop icon will appear. Make sure your meter and test strip codes match. If the code numbers match, you are ready to begin the test. If they do not match, please insert new test strip and check the code again.

**!** CAUTION

Do not force the test strip into your meter. This may cause malfunction.



2

Apply Control Solution

Gently agitate the solution by rolling the vial back and forth between your hands. Prepare a drop on a clean dry surface. Slowly let the yellow side-edge of the test strip touch the drop of control solution following the arrow tail. Once the confirmation window is full, your meter will begin the count down.



TIP

To ensure accurate test results

- Gently shake the control solution (vial) to ensure the control solution is mixed well before each test.
- Squeeze the vial to discard the first drop before the test.



3

Results Appear in 5 seconds

Your meter display will count down from "5" to "1", then the result will appear.



INFORMATION

Do not remove the test strip from your meter until you select the "Control Solution icon" in the event record mode. If you remove the test strip before making the selection, you cannot save the result. See page 21–22 for more details.

! CAUTION

The Embrace PRO™ Control Solution range printed on the test strip vial is for control solution only. It is used to test the performance of your meter and test strip. It is not a recommended range for your blood glucose level.

**4****Compare Control Solution Results**

Compare the control solution test result with the range printed on the test strip vial. The result should fall within this range. If control solution results are out of this range, repeat the test. Refer to The Embrace PRO™ Test Strip Instruction for the use.

🔍 INFORMATION

If test results fall outside of the range printed on the test strip vial, repeat the test. Out-of-range results may be caused by one or more of the following:

- Expired or contaminated control solution.
- Expired or damaged test strips.
- Error in performing test.
- The code number "71" and "72" on the system is just classification number for the "Embrace PRO™ Test Strip"
- Meter, test strips or control solution are kept too warm or too cold.
- Meter malfunction

! CAUTION

If your control solution test results continue to fall outside the range printed on the test vial, the Embrace PRO™ Blood Glucose Meter may not be working properly.

- Do not use the above mentioned system to test your blood.
- Contact Omnis Health at 1-877-979-5454



5

Record the Control Solution Test Results in the Meter

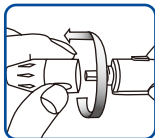
To record the control solution result, press any of +/- button on the meter to select control solution event icon. Press the power button if selection is completed. The control solution test results will be saved.

🔍 INFORMATION

A screenshot of the Embrace PRO Blood Glucose Meter display. The screen shows 'Code 72' at the top, a large '104' in the center, 'mg/dL' below it, a battery icon, '5-28', and '10:04 am' at the bottom.

Code 72
104
mg/dL
5-28
10:04 am

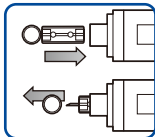
Record all control solution tests with control solution event '🔋' to distinguish them from those of actual blood glucose tests in the meter memory. Recorded control solution test results will not be calculated into your averages.



1

Remove the cap

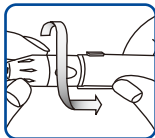
Turn the lancing device cap counter-clockwise to remove the cap.



2

Insert a Lancet into the Lancet Holder.

Insert the lancet firmly into the holder until it is fully seated. When the lancet is placed in the lancing device, remove the protective disk of the lancet. Do not discard the protective disk of the lancet, it will be used to discard the lancet safely after its use.



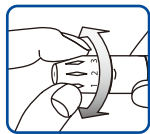
3

Replace the cap

Turn the cap of the lancing device clockwise until it fits.

CAUTION

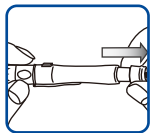
- Before using the lancing device, wash hands in warm water with soap. Make sure to rinse and dry your hand thoroughly. Perspiration, dirt or water remaining on your hands may cause incorrect test results.
- Avoid using hand lotion or any other oily product before using the device.



4

Adjust the Setting of Puncture Depth

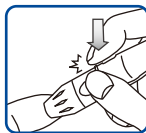
The dial for setting the puncture depth is at the tip of the lancing device. Higher number indicates deeper puncture. Thus, dial to the lower number for thin skin.



5

Charge the Lancing Device.

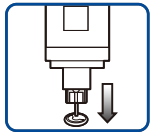
Draw back the lower part of lancing device until it clicks, then release it.



6

Lance your Finger

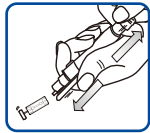
Place the lancing device carefully on the tip of your finger and press the release button.



7

Remove the Used Lancet

Place the protective disk on a flat surface. With the used lancet still in the lancing device, push the lancet needle completely into the protective disk. Push the lancet ejector forward with the thumb and simultaneously pull out the sliding barrel to dispose of the used lancet in a proper bio-hazardous container.



! CAUTION

- To reduce the risk of infection, never share a lancet with another person.
- Lancets are for single use only. Always use a new sterile lancet.
- Used test strips and lancets may be considered biohazardous waste in your area. Be sure to follow your local regulations for proper disposal of used strips, lancets and meter device.

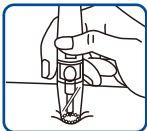
RECOMMENDED AVAILABLE LANCETS

Some general sterilized lancets are BD-Ultra Fine, E-Z Ject, G-P Lite, Microlet, Monolet, Soft Touch, Ultra TLC, Unilet GP, and Greenlan.

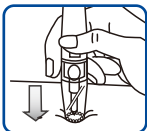
Note : Some less known lancets may not work properly with the Lancing Device due to their dimensions. Please, contact your supplier to make sure you are using proper lancets.

USING THE CLEAR TIP FOR ALTERNATIVE SITE TESTING(AST)_OPTION

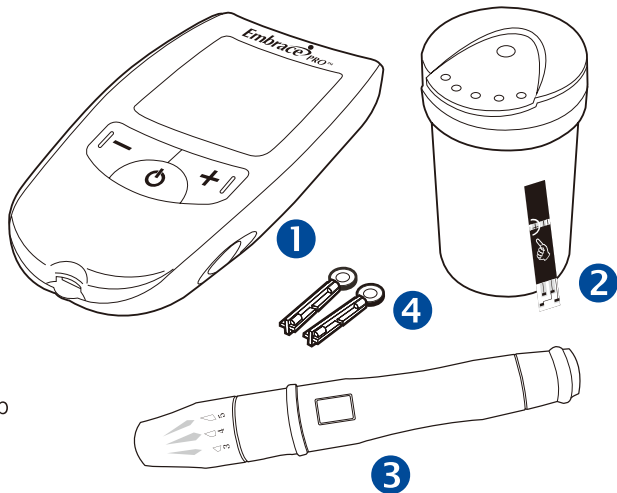
Replace the cap of lancing device with the clear cap.



- 1 Place the Lancing Device on the skin in the chosen area, press and hold the Lancing Device continuously for a few seconds, then push the release button.



- 2 Watch through the clear tip until a sufficient blood sample is taken. If there is not enough blood, gently massage the area until a sufficient sample has been collected.



- ① Embrace PRO™ Meter
- ② Embrace PRO™ Test Strip
- ③ Lancing Device
- ④ Lancets



1

Insert Test Strip

Gently insert the test strip with the printed side facing up into the test port of your meter. Push it all the way in until it will go no further. Meter will beep and code number will appear automatically on your meter. Make sure your meter code and test strip code match.

! CAUTION

Do not force the test strip into the meter. This may cause malfunction of the device.



2

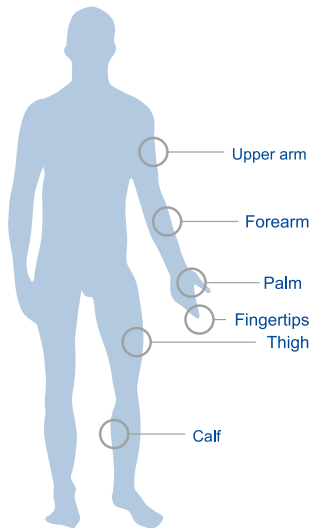
Obtain a Drop of Blood

Obtain a drop of blood from your finger using the lancing device (see page 13–15). The blood sample must be at least 0.5 micro liter in volume [actual size ●]

TIP



Gently massaging the fingertip will help you to obtain a round drop of blood. Do not smear the blood sample.



About Alternate Site Testing (AST)

- Important : There are limitations for doing AST. Please consult your healthcare professional before you do AST.
- What is AST?
Alternate site testing (AST) means you can use parts of the body other than your fingertips to check your blood glucose levels. The Embrace PRO Blood Glucose Meter allows you to test on your upper arm, forearm, palm, thigh and calf.
- What's the advantage?
Fingertips feel pain more readily because they are full of nerve endings (receptors). At other body sites, nerve endings are not so numerous, and you will therefore not feel as much pain as you will experience at the fingertip.
- When to use AST?
Food, medication, illness, stress and exercise can affect blood glucose levels. Capillary blood at the fingertip reflects these changes faster than capillary blood at other sites. Therefore, only use fingertip to measure blood glucose level under following conditions: during or immediately after meal, physical exercise or stressful event. AST is acceptable two hours or more after your last meal.

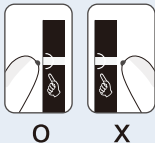


3

Apply the Blood Sample

Apply a round drop of blood on the yellow side-edge of test strip and then drop of blood fills the confirmation window of test strip. Hold the blood drop to the yellow side-edge of test strip until blood has completely filled the confirmation window before your meter beeps. Your meter initiates a count-down.

! CAUTION



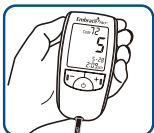
You should apply blood to the pointer on the strip as directed.

- Do not drop blood on the surface of the test strip.
- Touch the yellow side-edge of test strip when you insert the blood.

! CAUTION



- If there is insufficient amount of blood in confirmation window, you may get inaccurate result. See the figure on the left for the required blood volume necessary to perform the test properly.
- If the confirmation window does not fill completely before the meter begins the count down, do not add more blood to the test strip; discard the test strip and repeat the test.



4

Results Appear in 5 seconds

Once the meter completes the count down from “5” to “1”, your test result will appear on the meter display. If you remove test strip immediately, only the test result (not the event record) will automatically save in the meter memory. Recording the event with each reading may help with an effective diabetes management. To enter the event record mode, you may press +/- button on meter before removing the test strip from the meter (See pages 21–22 for more details).



INFORMATION

If you do not apply a blood drop within 5 minutes, your meter will turn off automatically. Once the meter turns off, remove the test strip and then insert it back into your meter to restart the test.



TIP

After the test, press any of +/- button in the event record mode before removing the test strip from your meter. Recording the testing condition will lead you to more effective diabetes management.

The event recording mode allows you to store test results with your condition or event (pre-meal, post-meal or control solution). This feature can help you and your healthcare provider effectively manage your glucose level.

! CAUTION

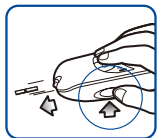
Do not remove test strip from the meter until the recording of an event icon regarding your condition is completed. Once you remove test strip from the meter, you cannot enter the event recording mode.

**1****Press +/- Button After the Test**

Once the test result appears on the meter display, press any +/- button to enter the event recording mode.

**2****Select the Event Icon**

There are 3 different event icons: Post-Meal, Pre-Meal and Control Solution. Select one of the 3 event icons regarding your condition. If you choose not to select an event icon, press +/- button.



3

Remove the Test Strip

After selecting an event icon, remove the used test strip by pushing the release button on the side of the meter. The test strip will be discharged automatically. When the test strip is discharged, the event icon will be saved in the meter memory automatically.



Post-Meal

Select this icon after meal.
(food intake)



Pre-Meal

Select this icon before meal.



Control Solution Icon

Select this icon if performing control solution tests or improper blood glucose test. Record all control solution test with control solution icon to distinguish them from blood glucose tests in the meter memory. Recorded control solution tests will not be included in your averages.

The Embrace PRO™ Meter will display result between 20 and 600 mg/dL. If your test result is lower than 20 mg/dL, “Lo” will appear on the meter display. If your test result is higher than 600 mg/dL, “Hi” will appear on the meter display.

! CAUTION



- If “HI” or “Lo” appears instead of a result, retest your blood glucose immediately with a new test strip. If the same message appears, check the system with Embrace PRO™ Control Solution. If your meter and test strip are working correctly, you must contact your healthcare professional immediately.

Expected values (for people without diabetes)¹

Status	Range
Fasting and before meals	70 - 100 (mg/dL) (3.9-5.6 mmol/L)
2 hours after meals	Less than 140 mg/dL (7.8 mmol/L)

- Do not diagnose diabetes yourself by comparing your test results with the above values. Contact your healthcare provider if results fall outside the expected value ranges.

Reference

1. ADA Clinical Practice Recommendations 2003

Your Embrace PRO™ Meter has a memory that automatically stores up to 500 most recent test results according to date, time and event. It also provides you with averages of your blood glucose test results for any particular day (0d, 7d, 14d, 21d, 28d, 60d, 90d) You can review the test result stored in the memory by following these steps.



1

Press +/- button

To enter the memory mode, press +/- button with the meter turned on.

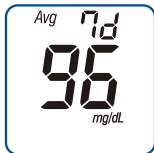


INFORMATION

Mem



- If there are no test results the meter will not display anything and +/- button will not operate.



2

Indicate the Average Value

You can change the number of days that calculates the average. You can set the number of days (0d, 7d, 14d, 21d, 28d, 60d, 90d) in the set mode. "7d" shown in the left figure, indicates that the value 96 is an average calculated over 7-day-period.



INFORMATION

Calculation of averages does not include individual event averages, instead includes the whole test results' average. The Embrace PRO™ Blood Glucose Meter will use 600mg/dL for any "HI" resulted, and 20mg/dL for "Lo" results.



TIP



To delete all test results in the meter memory, press the power button for 5 seconds until "CLR" flashes when average value is displayed. And then all stored test results in memory will be deleted.



3

Recall your Test Results

Press and release +/- button once to make the most recent test results appear on the meter display. Every time you press and release +/- button, your meter will display the next result up to 500 test result.

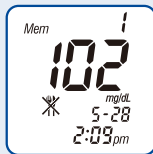


TIP

Press and hold +/- button in the memory mode in order to view the test results faster.



INFORMATION



– If there is no button activity for 3 seconds in the memory mode, the code will be displayed.



TIP



To delete individual test result in the memory mode, press the power button for 5 seconds until “dEL” flashed 3 times.



4

Exit the Memory Mode

Press and release the power button once to exit from the memory mode.

Embrace PRO™ Blood Glucose Meter comes with the time, date, alarm (0), average day (7) and unit of measurement (mg/dL) preset. However, if you need to change the setting of the meter, or if you changed the battery, you may need to enter the set mod and reset. It is important to set the correct time and date of each blood glucose test result help you and your healthcare professional track changes in your blood glucose level.

**INFORMATION**

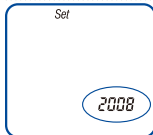
After replacing the battery, you may update the time and date setting.

**1****Press and Hold the Power Button in 3 seconds**

With the meter turned on, press and hold the power button until "SET" appears on your meter. Release the power button to enter the set mode. The year setting will begin to flash.

**INFORMATION**

You may exit at any time when setting up the time and date if you press and hold the power button for 3 seconds. The settings you have already made will be saved.

**2****Set the Year**

Press and release +/- button to adjust the year until the correct year appears on the meter display. If you press and release the power button in set mode, your meter advances to the next month setting.

**TIP**

Press and release the power button in order to advance to the next setting steps in set mode. Press and release +/- button to adjust the number in set mode. To move faster, press and hold +/- button.

Set

2 - 9

3

Set the Month

The month setting will start flashing. Press and release +/- button until you get the correct month. If you press and release the power button, your meter advances to the next days setting.

Set

2 - 9

4

Set the Day

The day setting will start flashing. Press and release +/- button until you get the correct day. If you press and release the power button, your meter advances to the next date format setting.

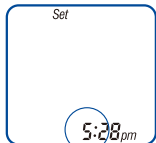
Set

9 . 2

5

Set Date Format

The date format setting will start flashing. Press and release +/- button until you get the date format that you want. If you press and release the power button, your meter advances to the next hours.



6

Set the Hour

The hour setting will start flashing. Press and release +/- button until you get the correct hour. If you press and release the power button, your meter saves the hour and advances to the next setting minutes steps.



7

Set the Minutes

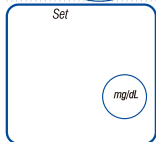
The minutes setting will start flashing. Press and release +/- button until you get the correct minute. If you press and release +/- button, your meter advances to the next time format setting.



8

Set the Time Format

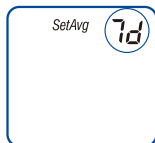
The time format setting will start flashing. Press and release +/- button to adjust until you get the correct time format. If you press and release the power button your meter advances to the next unit of measurement setting.



9

Set the Unit of Measurement

The unit setting (mg/dL or mmol/L) will start flashing. Press and release +/- button until you get the unit measurement that you want. If you press and release power button, your meter advances to the next step period of average setting.



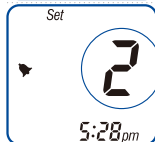
10 Set the Period of Average

The period of average setting will start flashing. Press and release +/- button until you get the period of average setting that you want (0, 7, 14, 21, 28, 60, 90). If you press and release the power button, your meter advances to the next beep setting.



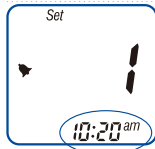
11 Set the Beep

When Beep appears, press +/- button, beep icon will be changed to 'On' or 'Off'. If the beep indicates 'Off', you don't need to set the alarm and just finish the set mode.



12 Set the Alarm (upto 4 times a day)

The alarm setting will start flashing. Press and release +/- button until you get the alarm setting that you want. If you press and release the power button, your meter advances to the next time of alarm setting steps.



13 Set the Time of Alarm

The setting for the time of alarm will start flashing. Press and release +/- button until you get the alarm time that you want.

14 Press the Power button.

Press the power button and the meter will turn off automatically, and the setting information you entered will be saved.

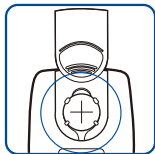
Your meter comes with one battery (CR2032) which is already installed. This battery will provide you with enough power to perform about 1,000 tests. The meter will alert you when the power is getting low by displaying (🔋) message. In this case, you can test several times, but the battery should be replaced with a new one as soon as possible. If "bAt" appears on the meter display, your meter will not operate. The battery must be replaced.

! CAUTION

- Always turn off your meter before replacing the battery. If you replace the battery with the meter turned on, all stored test results in your meter memory will be erased.

**1****Remove the Battery Cover**

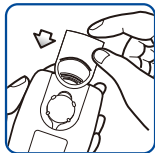
Press the "Open" arrow and slide forward in the direction of the arrow. The battery cover will release.



2

Replace the Battery

Remove the old battery and insert the new one with “+” sign facing up.

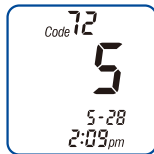
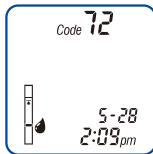
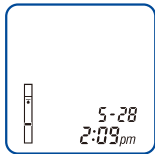
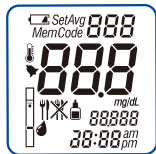


3

Close the Battery Cover

Slide the battery cover until it clicks into the device.

Message



System check. Verifies that all segments are working.

The system is ready to accept a test strip.

The system is ready to accept a blood sample. (This is an example of a code stored in your meter)

Your meter display count down from "5" to "1". The system calculates the blood glucose test for the results.

What it Means

No action required.

Insert the test strip into the test port of your meter. Check the code that appears on your meter display with the code number on the test strip vial.

Apply a blood sample to the test strip. (See pages 17–19 for how to test your blood glucose)

No action required.

Action



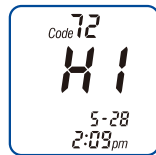
A blood glucose test results in mg/dL.



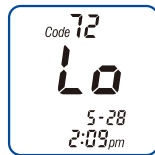
A blood glucose test results in "mmol/L".



System is ready to record the event icon as your condition.



Your blood glucose reading is higher than 600mg/dL(33.3mmol/L).



Your blood glucose reading is lower than 20mg/dL(1.1 mmol/L).

If you want to record the event icon as your condition, press +/- button before removing the used strip.

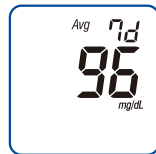
If you want to record the event icon as your condition, press +/- button before removing the used strip.

Select any of event icons using +/- button. To store your test result with your condition, remove the used test strip after selecting the event icon.

This message indicates very high blood glucose. You should retest your blood glucose level and/or check the system with Embrace PRO™ Control Solution. If the system is working correctly, contact your healthcare professional immediately.

This message indicates very low blood glucose. You should retest your blood glucose level and/or check the system with Embrace PRO™ Control Solution. If the system is working correctly, contact your healthcare professional immediately.

Message



What it Means

A blood glucose test result stored in the memory.

Battery is getting low but you can still perform tests.

The "bAt" message on the meter display indicates that the energy level of the battery is too low to provide accurate results.

The average of blood glucose test result taken in the last 7 days.

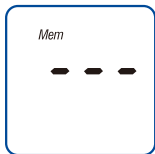
Action

No action required.

You can complete some tests from the time this symbol first appears but you should replace the battery as soon as possible.

Your meter will not operate. With the meter turned off, replace the battery immediately.

No action required.



There is no test result stored in this place in the memory.

No action required.



This error message indicates that the meter is used in outside of the proper range of temperature, the "Er1" message will "🌡️" appear on the meter display.

Leave the meter at a temperature between 50~104 °F (10~40°C) for at least 30 minutes before testing.



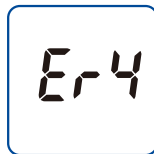
This error message indicates that used test strip was inserted in the test port.

Repeat the test with a new test strip.



This error message indicates there may be a problem with the test strip. It may have been damaged or removed during testing.

Repeat the test with a new test strip. Do not remove the test strip until test result appear on the meter display.



This error message indicates the sample was improperly applied or there was an electrical noise during the test.

Repeat the test with a new test strip.

Er-5

This error message indicates that the meter has an internal electric circuit problem.

Contact Omnis Health at 1-877-979-5454.

Er-6

This error message indicates that the meter has a problem with strip connection.

Contact Omnis Health at 1-877-979-5454, Troubleshooting Guide.

Er-7

This error message indicates that the meter has a problem with strip connection.

Contact Omnis Health at 1-877-979-5454, Troubleshooting Guide.

Er-8

This error message indicates that inserted blood is less than standard.

Repeat the test with a new test strip.

Er-9

This error message indicates that blood is applied to wrong direction of a test strip.

Repeat the test from right direction with a new test strip.

Troubleshooting

Cause

Action

1. The meter does not turn on after inserting a test strip.

Battery is dead.

Replace the battery.

The battery is installed incorrectly or there is no battery in the meter.

Check if battery is correctly installed. (See pages 32–33)

The test strip is inserted upside down or incomplete.

Insert the test strip correctly with the printed side facing up.

The meter may not be working properly.

Contact Omnis Health at 1–877–979–5454.

2. The meter does not start after applying the blood sample.

Not enough blood sample.

Repeat the test with new test strip.

The test strip may be damaged.

Repeat the test with new test strip.

Sample applied after the meter automatically turns off (5 minutes after last user action)

Repeat the test with new test strip.

Meter may not be working properly.

Contact Omnis Health at 1–877–979–5454.

Product Name	Embrace PRO™ Blood Glucose Meter
Model Name	AGM-4000
Method	Electrochemical method
Sample Volume	0.5 μ l
Test Strip	Embrace PRO™ Test Strip
Test Range	20~600mg/dL
Test Time	5 seconds
Calibration	Autocoding
Battery	CR2032 battery DC 3V
Battery Life	Approximately 1,000 tests
Glucose Unit	mg/dL or mmol/L (mg/dL:USA default)
Temperature	50~104°F(10~40°C)
Humidity	Less than 85%
Hematocrit	20~60%
Altitude	Up to 8200ft
Size	93.5 x 49.0 x 17.5 (mm)
Weight	40g(including battery)
Display	37.0 x 42.0 (mm) LCD
Memory Capacity	500 tests (date, time & event)
PC Interface	USB
Automatic Shut Off	5 minutes after last user action

– The performance of Embrace PRO™ Test Strips has been evaluated in clinical tests.

Accuracy :

The accuracy of the Embrace PRO™ Blood Glucose Meter was assessed by comparing blood glucose results obtained by 130 diabetes patients with those obtained using a YSI Model 2300 STAT Plus Glucose Analyzer.

For glucose concentrations < 75mg/dL

	Within ± 5mg/dL	Within ± 10mg/dL	Within ± 15mg/dL
Patient	53%	94%	100%
Technician	59%	94%	100%

For glucose concentrations ≥ 75mg/dL

	Within ± 5%	Within ± 10%	Within ± 15%	Within ± 20%
Patient	73.5%	95%	100%	100%
Technician	75.2%	92%	99%	100%

Repeatability (using venous whole blood) :

Repeatability (using control) :

Level	SD	CV	Level	SD	CV
58 mg/dL	1.88 mg/dL	3.22 %	39.8 mg/dL	2.32 mg/dL	5.82 %
103 mg/dL	1.95 mg/dL	1.89 %	110 mg/dL	3.28 mg/dL	2.99 %
150 mg/dL	2.73 mg/dL	1.82 %	311 mg/dL	9.20 mg/dL	2.96 %
190 mg/dL	3.72 mg/dL	1.96 %			
324 mg/dL	5.95 mg/dL	1.84 %			

Accuracy of AST:

The accuracy of Embrace PRO™ Blood Glucose Meter was assessed by comparing blood glucose results obtained by 51 diabetes patients with capillary blood obtained using a YSI Model 2300 STAT Plus Glucose Analyzer.

For glucose concentrations < 75mg/dL

	Patient			Technician		
	Within ± 5mg/dL	Within ± 10mg/dL	Within ± 15mg/dL	Within ± 5mg/dL	Within ± 10mg/dL	Within ± 15mg/dL
Finger	6/9(67%)	9/9(100%)	9/9(100%)	5/9(56%)	8/9(89%)	9/9(100%)
Palm	5/9(56%)	9/9(100%)	9/9(100%)	5/9(56%)	9/9(100%)	9/9(100%)
Upper arm	5/9(56%)	8/9(89%)	9/9(100%)	6/9(67%)	9/9(100%)	9/9(100%)
Forearm	6/9(67%)	9/9(100%)	9/9(100%)	5/9(56%)	9/9(100%)	9/9(100%)
Thigh	6/9(67%)	9/9(100%)	9/9(100%)	7/9(78%)	9/9(100%)	9/9(100%)
Calf	5/9(56%)	8/9(89%)	9/9(100%)	7/9(78%)	9/9(100%)	9/9(100%)

For glucose concentrations ≥ 75mg/dL

	Patient				Technician			
	Within ± 5%	Within ± 10%	Within ± 15%	Within ± 20%	Within ± 5%	Within ± 10%	Within ± 15%	Within ± 20%
Finger	22/42(52%)	35/42(83%)	42/42(100%)	42/42(100%)	26/42(62%)	39/42(93%)	42/42(100%)	42/42(100%)
Palm	25/42(60%)	39/42(93%)	41/42(98%)	42/42(100%)	33/42(79%)	39/42(93%)	42/42(100%)	42/42(100%)
Upper arm	23/42(55%)	36/42(86%)	42/42(100%)	42/42(100%)	37/42(88%)	42/42(100%)	42/42(100%)	42/42(100%)
Forearm	26/42(62%)	39/42(93%)	42/42(100%)	42/42(100%)	34/42(81%)	41/42(98%)	42/42(100%)	42/42(100%)
Thigh	25/42(60%)	36/42(86%)	42/42(100%)	42/42(100%)	31/42(74%)	40/42(95%)	42/42(100%)	42/42(100%)
Calf	34/42(81%)	38/42(91%)	41/42(98%)	42/42(100%)	34/42(81%)	41/42(98%)	42/42(100%)	42/42(100%)



 /embracemeter

 @embracemeter

We're Here to Help.

If you have any questions about our Embrace® products, please call us toll-free Monday thru Friday, 9AM - 5PM EST or visit our website.

Estamos aquí para ayudar

Si usted tiene alguna pregunta sobre nuestros productos Embrace®, por favor llámenos gratis Lunes a Viernes, 9AM - 5PM EST o visita nuestro Web site.

Manufactured for:

Fabricado para:



1736 River Hills Drive
Suite 6
Nashville, TN 37210

1-877-979-5454

www.omnishealth.com

A812DD810
08/2022

PN 0000000000
Rev. 10/13