



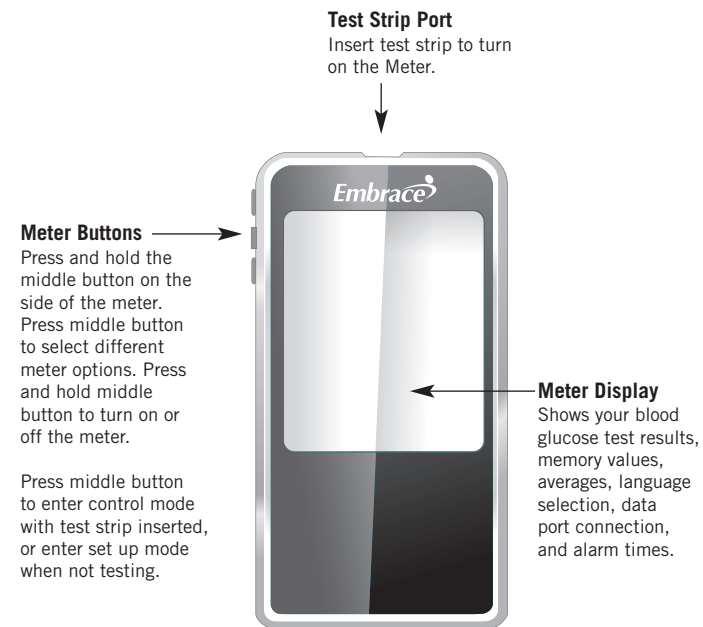
No Code Meter Quick Reference Guide



Note: Please read through your Meter User Manual before using this guide.

Understanding Your New Meter

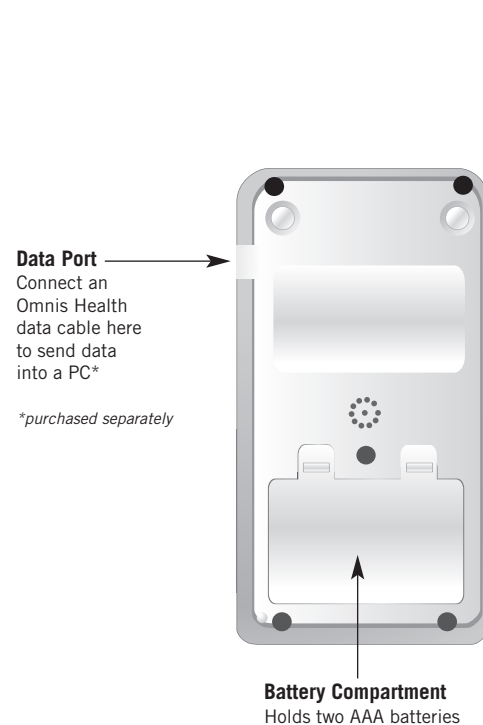
Front of the Embrace No Code Meter



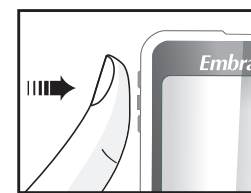
Note: Please refer to the Embrace No Code instruction manual for more complete and detailed instructions and important safety warnings.

Understanding Your New Meter

Back of the Embrace No Code Meter



Setting Date and Time



Enter Button

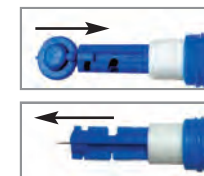
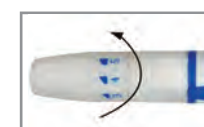
1. Press and hold the middle button to turn on the meter.
2. Current year will flash, adjust to the correct year by pressing the center button to confirm your choice.

3. Current year will flash, adjust to the correct year by pressing up or down with the arrow buttons, press the center button in to confirm your choice.



Up and Down Buttons

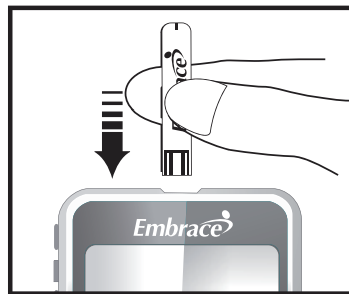
Preparing your lancing device



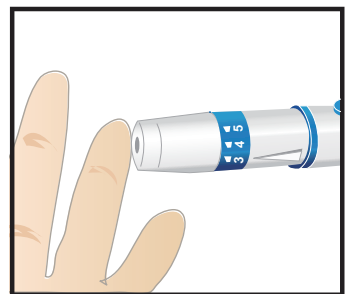
1. Twist off the lancing device cap and insert an unused lancet.
2. Twist the protective cover off from the lancet.
3. Place the lancing device cap back onto the lancing device and adjust the puncture setting (1 is lightest and 5 is deepest).
4. Pull back on the lancing device.
5. Press the button to lance.

Embrace Lancing Device included in Starter Kit option (see page 4 in User Manual).

Testing Your Blood Glucose

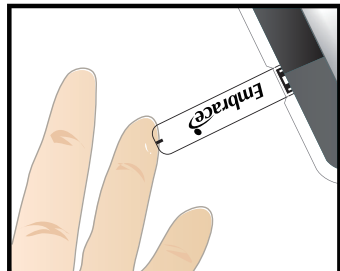


1. Insert the test strip to turn on the Meter.

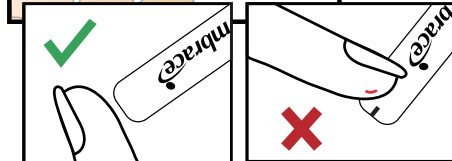


3. Lance your finger.

Testing Your Blood Glucose



4. Bring your lanced finger close to the tip of the test strip as shown. Blood will be pulled in when contact with the tip of the test strip is made.



5. Your blood glucose result will show up in 6 seconds.



Note: Please refer to the Embrace No Code instruction manual for more complete and detailed instructions and important safety warnings.

Recalling Memory



1. Turn on the Meter by pressing and holding the center button in
2. Press the center button in again to enter function mode
3. Press the center button again when 'mem' icon flashes to enter memory recall

Press the top button to see stored results from the most recent to oldest. Your Meter can hold up to 300 dates and time stamped results. Control solution results will be flagged by 'ctl' icon at the lower left hand corner. When the Meter memory is empty, the screen will show 'nil.'

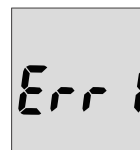


Scroll down to see the average of the results. The averages are 7, 14, and 30 days.



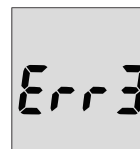
Problem Solving

Message Description and Remedy



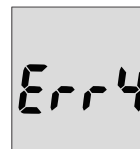
Electronic malfunction.

Take the batteries out and insert them into the Meter again and turn on. If the message is still there, contact 1-877-979-5454.



Used test strip.

Insert a new unused test strip and test again.



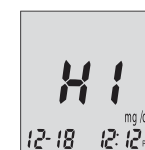
Not enough blood in the test strip.

Insert a new test strip and test again. Make sure the blood fills the confirmation window completely.

CAUTION: IF YOU SEE "HI" OR "LO" DISPLAYED, YOUR BLOOD GLUCOSE LEVEL MAY BE ABOVE 600 MG/DL OR BELOW 20 MG/DL, REPEAT TESTING. IF YOU STILL RECEIVE THE SAME RESULT, CALL YOUR PHYSICIAN OR HEALTHCARE PROFESSIONAL IMMEDIATELY.

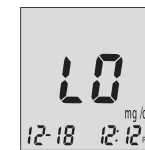
Problem Solving

Message Description and Remedy



Test result is higher than 600 mg/dL.

Use a new test strip and test again. If the result is still the same, call your physician or healthcare professional immediately.



LO Test result is lower than 20 mg/dL.

Use a new test strip and test again. If the result is still the same, call your physician or healthcare professional immediately.

Note: Please refer to the Embrace No Code instruction manual for more complete and detailed instructions and important safety warnings.

Manufactured for:



6045 East Shelby Drive
Suite 1
Memphis, Tennessee 38141
1-877-979-5454
www.embracemeter.com



facebook.com/embracemeter

PN 65015010109 REV. 1/12